

Printed Pages – 7

Roll No. :

327354(27)

B. E. (Third Semester) Examination, April-May 2020

(New Scheme)

(EI Engg. Branch)

NETWORK ANALYSIS and SYNTHESIS

Time Allowed : Three hours

Maximum Marks : 80

Minimum Pass Marks : 28

Note : Part (a) of each question is compulsory & attempt any two parts from (b), (c) & (d) of each questions.

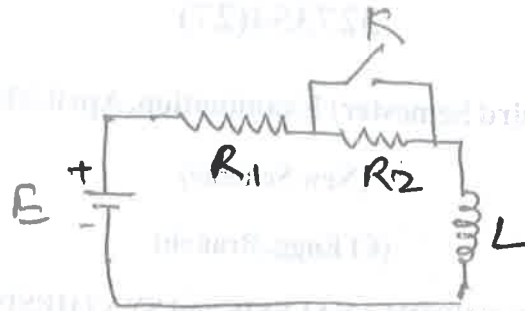
Unit-I

1. (a) Find the Laplace transform of step and unit impulse signal. 2
- (b) Find the step response of RC series circuit. 7
- (c) In the figure, the battery voltage is applied for a steady state period. Obtain the compute expression

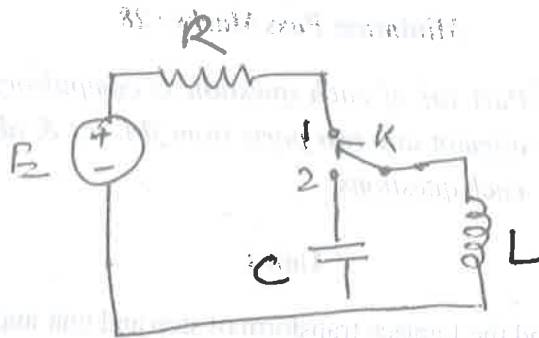
[2]

for current after closing the switch K . Assuming

$R_1 = 1 \Omega, R_2 = 2 \Omega, L = 1 \text{ H}$ and $E = 10 \text{ V}$. 7



- (d) In the circuit shown steady state exists when switch K is in position 1. At $t = 0$, it is moved to position 2. Obtain the expression for current. 7



Unit-II

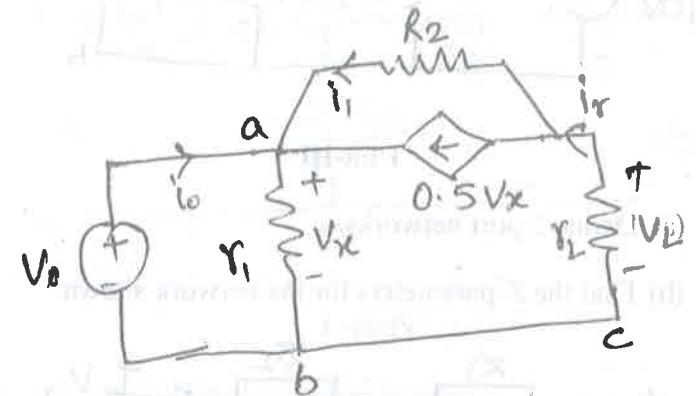
2. (a) Define the condition for maximum power transfer in a circuit. 2

[3]

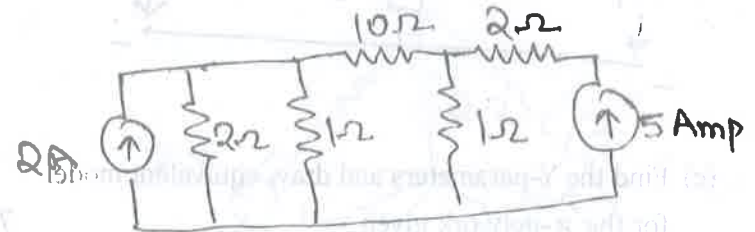
Find V_L

- (b) Find V_L using Kirchoff's law, assuming $R_L = 10 \Omega,$

$V_0 = 10 \text{ V}, R_1 = R_2 = 1 \Omega.$ 7

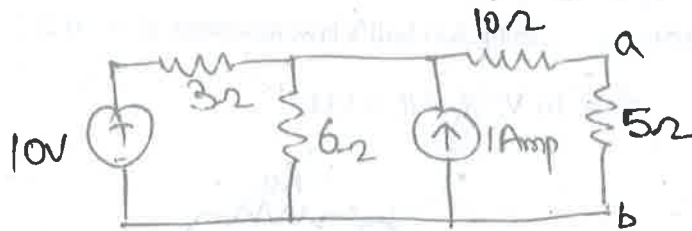


- (c) What is the power loss in the $10\text{-}\Omega$ resistor? Use Thevenin theorem. 7



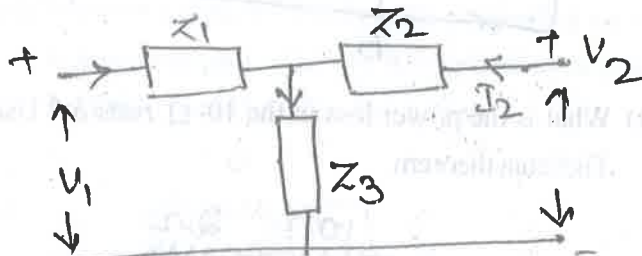
- (d) Find the current in the 5Ω resistor for the circuit shown : 7

[4]

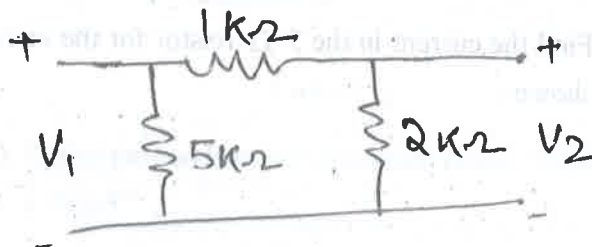


Unit-III

3. (a) Define 2 port networks. 2
 (b) Find the Z-parameters for the network shown. 7



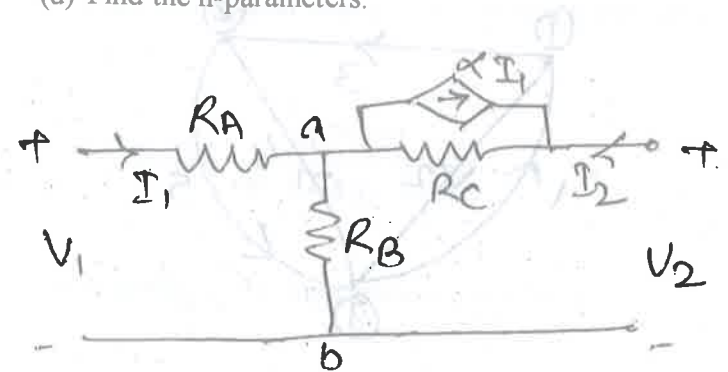
- (c) Find the Y-parameters and draw equivalent model for the π -network given : 7



327354(27)

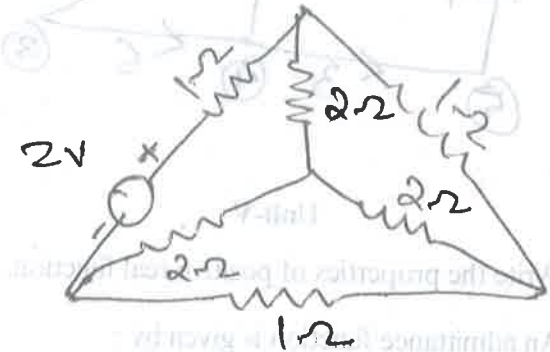
[5]

- (d) Find the h-parameters. 7



Unit-IV

4. (a) Define branches, link and twigs. 2
 (b) Draw the graph and write tie-set matrix & find branch currents. 7

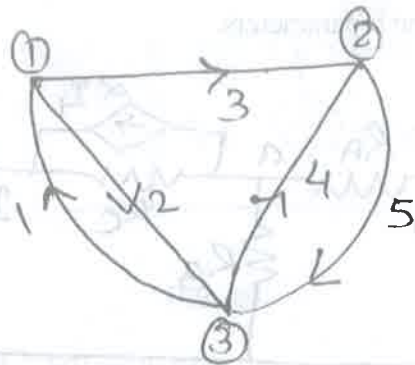


- (c) Develop the fundamental cut-set and equilibrium equations on nodal basis. 7

327354(27)

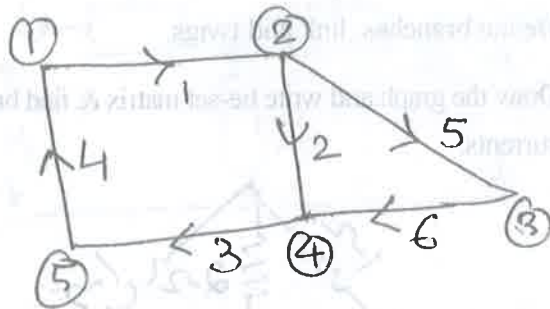
PTO

[6]



(d) Show the cut-set for the graph and develop the fundamental cut-set matrix.

7



Unit-V

5. (a) Write the properties of positive real function.

2

(b) An admittance function is given by :

$$Y(s) = \frac{4s^2 + 6s}{(s+1)}$$

Realise the network.

7

[7]

(c) Find the second foster form of the admittance function :

$$Y(s) = \frac{s(s^2 + 9)}{10(s^2 + 4)(s^2 + 25)}$$

7

(d) A driving point impedance is given by :

$$Z_{d.c}(s) = \frac{s(s^2 + 4)(s^2 + 6)}{(s^2 + 1)(s^2 + 5)}$$

Obtain the first form of Cauer network.

7